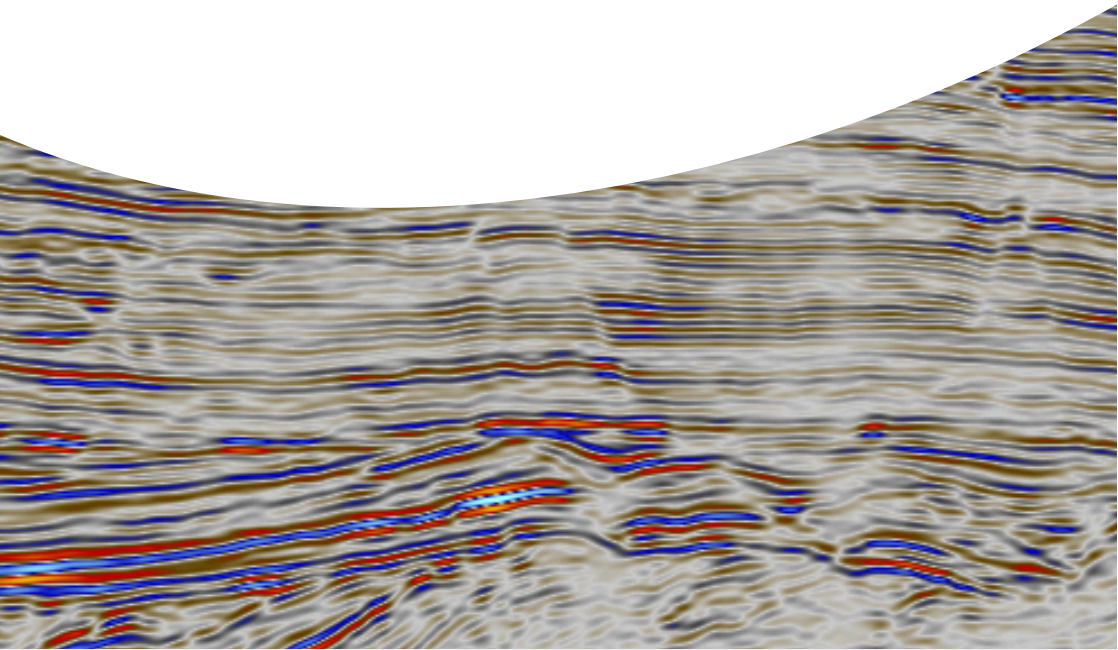


ExploreTerra

Unearth Your Energy Potential

Training

SEISMIC INTERPRETATION



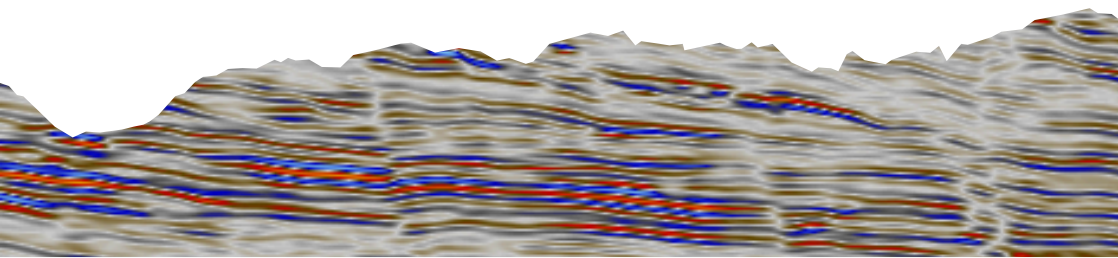
This course covers the main concepts underlying the interpretation of 2D and 3D seismic data, from its history, the methods of data acquisition, processing, visualization and software.

ExploreTerra

Unearth Your Energy Potential

WELCOME!

The main objective of this course is to prepare participants for the use of seismic data in their activity, particularly in the oil industry. Several examples of tools, test data and interpretation techniques will be given that will enable participants to continue their training during and after the course



SCOPE



- **Duration:** 30 hours spread over 5 hours per week for 6 weeks (flexible based on the participants and availability).
- **Price per person:** 1500 \$
- **Target Audience:** Geologists, geophysicist, geology engineers and exploration and production professionals
- **Format:** This course includes theoretical sessions and practical application on a real data by using petrel software (based on the audience availability)
- **Focus Areas:** Fundamentals of seismic interpretation, Borehole seismic and synthetic seismogram, structural and stratigraphic seismic interpretation
- **Type or training:** Remotely or in person
- **Maximum number of students:** 15
- **Languages:** English / Arabic
- **Software:** Petrel software (Intermediate level)

CONTENT



Module 1: Overview of Seismic Interpretation

- Definition and importance of seismic interpretation
- Historical development and applications
- Seismic Wave Propagation
- Basics of Seismic Data Acquisition and Processing
- Seismic survey design
- Attribute of reflection signal and vertical and horizontal resolution.

Module 2: Seismic well tie

- Borehole geophysics
- Techniques for tying well logs to seismic sections
- Building synthetic seismograms

Module 3: Horizon and Fault Mapping

- Manual and automated horizon picking
- Interpreting continuous and discontinuous reflectors
- Fault Identification and Interpretation
- Recognizing faults in seismic data

Module 4: Interpretation of complex structural geometry I

- Structural seismic interpretation along extensional regime.
- Structural seismic interpretation along compressional regime.

CONTENT



Module 5: Interpretation of complex structural geometry II

- Structural seismic interpretation along inversion regime.
- Structural seismic interpretation along wrench regime.

Module 6: Stratigraphic Seismic interpretation

- Principles of Seismic Stratigraphy
- Seismic sequence stratigraphy concepts
- Identifying depositional sequences and systems tracts
- Defining and interpreting seismic facies
- Integrating seismic facies with geological models

Success Stories:

Dr. Munir EL-Mahdy is a development geoscientist with more than 16 years working in the oil field.

YOUR INSTRUCTORS



Munir EL-Mahdy, PhD

Development Geoscientist

Experienced Geoscientist with more than 16 years in the oil and gas industry, specializing in geological modeling, seismic interpretation, and reservoir characterization. Proven track record of delivering high-quality subsurface models that enhance exploration and production strategies. Adept at using advanced software tools and leading cross-functional teams to achieve project objectives.

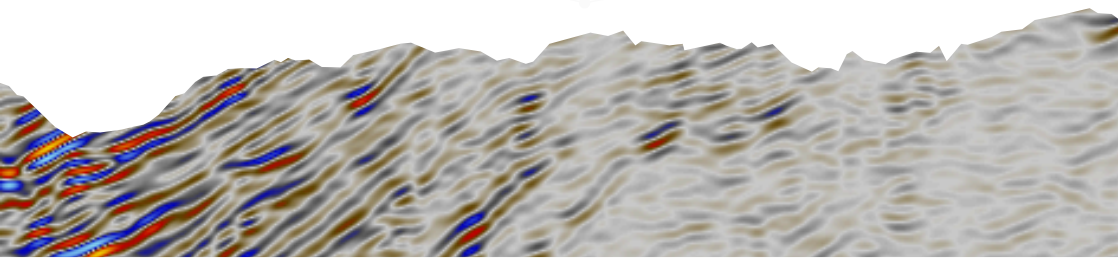
ExploreTerra

Unearth Your Energy Potential

ABOUT COMPANY

ExploreTerra's vision is to contribute to the geoscience consultancy and training landscape. Our core purpose is to establish a dynamic platform that creates connections between available talent and opportunities or needs within the energy industry.

We are dedicated to enriching the energy sector through specialized services and empowering geoscientists with technical training, tailored technology transfer, and the adoption of integrated, multidisciplinary best practices.



GET IN TOUCH

Our training programs, designed by seasoned geoscientists, are tailored to meet contemporary industry needs.

We prioritize technical and core skill enhancement and the incorporation of advanced technologies, equipping professionals for the dynamic field of geoscience.

CONTACT US :



munir.elmahdy@exploreterra.net



www.exploreterra.net



contact@exploreterra.net



[explore.terra.energy](https://www.instagram.com/explore.terra.energy)



[ExploreTerra](https://www.facebook.com/ExploreTerra)



[ExploreTerra](https://www.linkedin.com/company/ExploreTerra)